

basaltina stone project





basaltina stone project

Quella dura potenza, intrinseca alla pietra.

La forza della terra si cristallizza in una pietra lavica. La basaltina, fatta di calore, ceneri, gas, energie millenarie. Il suo grigio naturale rivive oggi nella ceramica, acquistando toni e sfumature nuove. Riempie gli spazi con gusto e discrezione; ogni venatura trattiene una storia.

The hard, intrinsic power of stone.

The power of earth crystallizes in lava stone. Basalt rock, made of heat, ashes, gas and energies thousands of years old. Its natural grey comes back to life again in ceramics, taking on new tones and variations. It fills spaces with subtle style, as every vein holds a story within.



BSP levigata



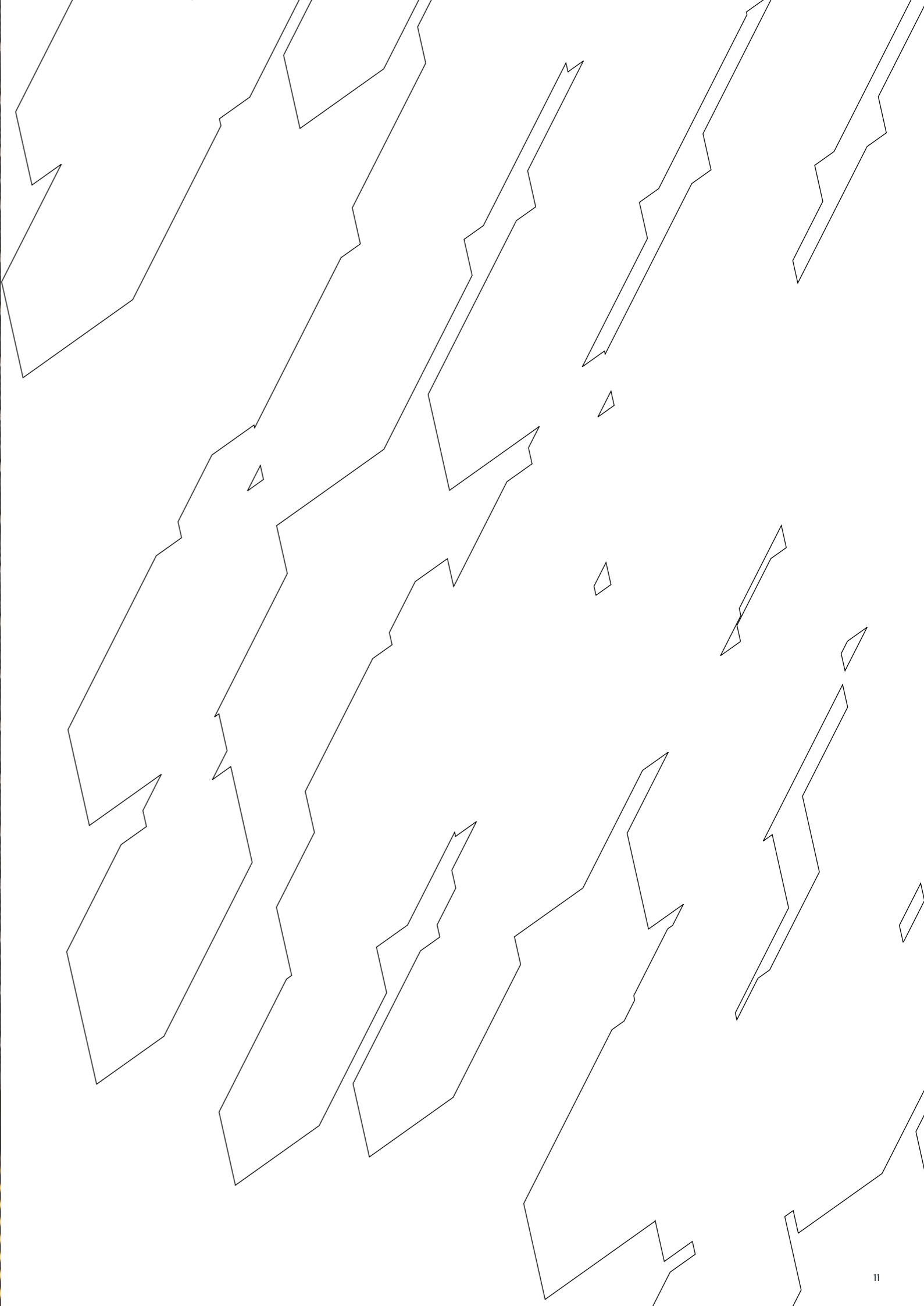
bsp levigata
60x60cm
23,6x23,6"

BSP lappata

bsp lappata



bsp lappata
30x60cm
11,8x23,6"
mosaico 1



bsp lappata



BSP stuccata

bsp stuccata



bsp stuccata
60x60cm
23,6x23,6"

BSP naturale



bsp naturale
30x60cm
11,8x23,6"



bsp naturale
30x60cm 11,8x23,6"
bsp sabbiata
60x60cm
23,6x23,6"



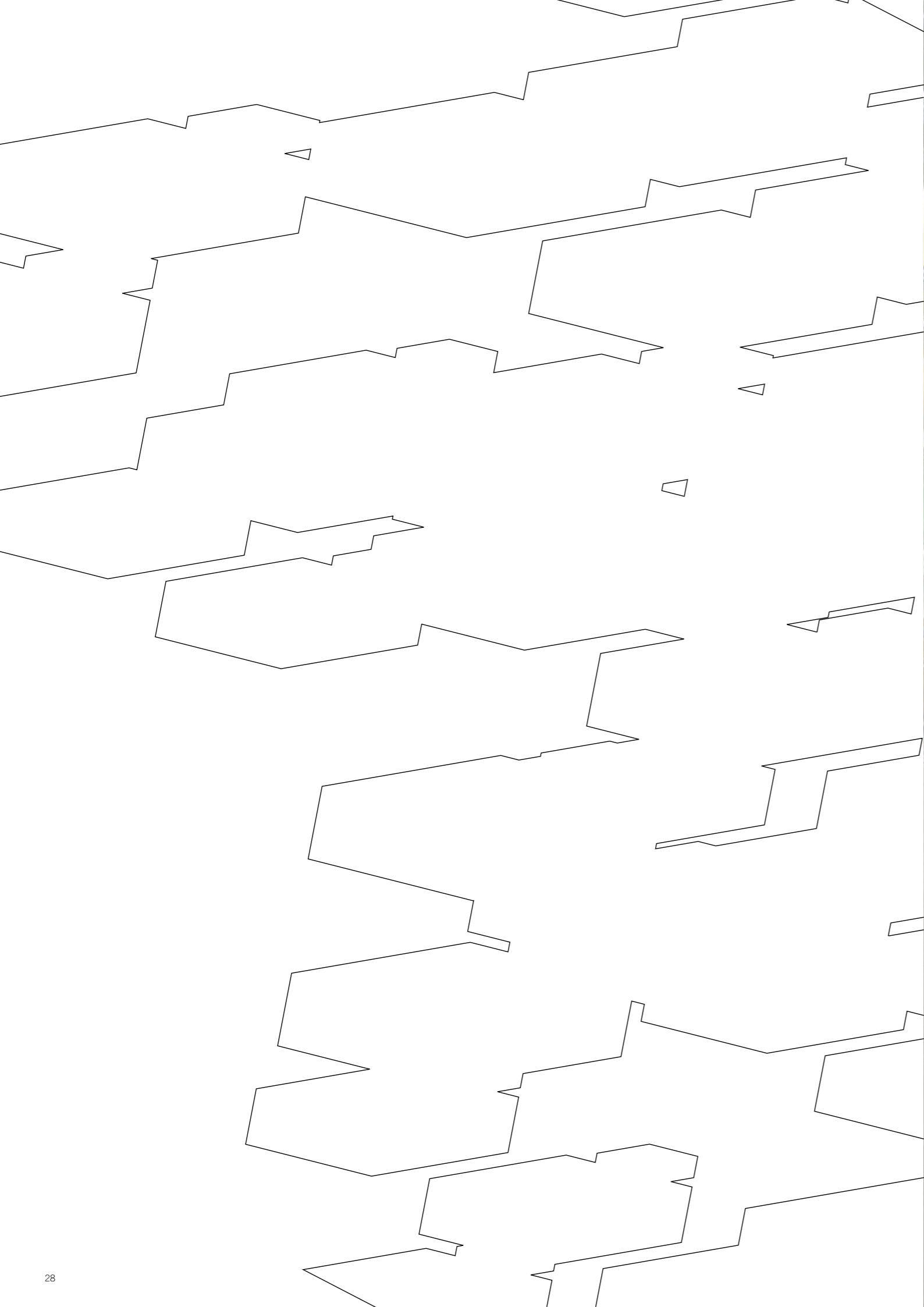
BSP sabbiata



bsp sabbiata
60x60cm
23,6x23,6"
bsp naturale
30x60cm 11,8x23,6"

bsp scalpellata

BSP scalpellata



bsp stuccata
60x60cm 23,6x23,6"
bsp scalpellata
30x60cm 11,8x23,6"



BSP texture



bsp texture naturale
30x60 11,8x23,6"
60x60cm 23,6x23,6"



levigata



30x60cm 11.8x23.6"
rett. LGVBSL4 1510



60x60cm 23.6x23.6"
rett. LGWBSL4 1510

lappata



30x60cm 11.8x23.6"
rett. LGVBSL3 1420



60x60cm 23.6x23.6"
rett. LGWBSL3 1420



60x120cm 23.6x47.2"
rett. LGXBSRD 1780

stuccata



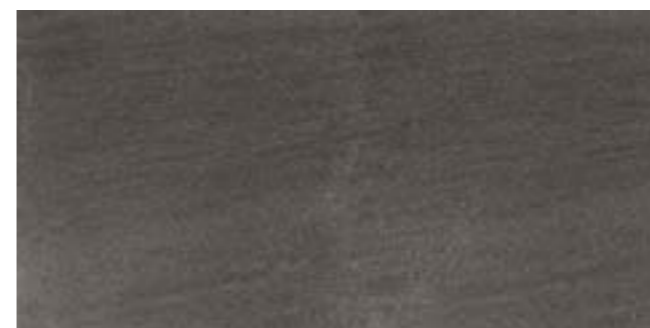
30x60cm 11.8x23.6"
rett. LGVBSR2 1330



60x60cm 23.6x23.6"
rett. LGWBSR2 1330

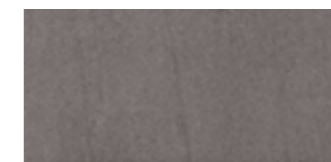


75x75cm 29.5x29.5"
rett. LGOBS2R 1510



60x120cm 23.6x47.2"
rett. LGXBSRC 1720

naturale



30x60cm 11.8x23.6"
rett. LGVBSR1 1330



60x60cm 23.6x23.6"
rett. LGWBSR1 1330

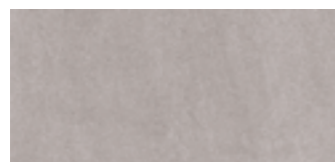


75x75cm 29.5x29.5"
rett. LGOBSIR 1510



60x120cm 23.6x47.2"
rett. LGXBSRB 1720

sabbia



30x60cm 11.8x23.6"
rett. LGVBSR0 1290



60x60cm 23.6x23.6"
rett. LGWBSR0 1290

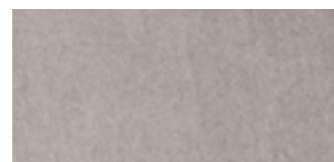


75x75cm 29.5x29.5"
rett. LGOBSR0 1510



60x120cm 23.6x47.2"
rett. LGXBSR0 1720

sabbia velvet



30x60cm 11.8x23.6"
rett. LGVBSRE 1290



60x60cm 23.6x23.6"
rett. LGWBSRE 1290



75x75cm 29.5x29.5"
rett. LGOBSRE 1510



60x120cm 23.6x47.2"
rett. LGXBSRE 1720

texture

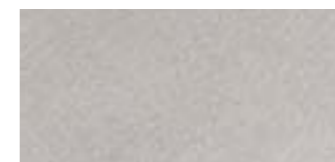


30x60cm 11.8x23.6"
nat. rett. LGVBSR7 1330
lev. rett. LGVBSL7 1420

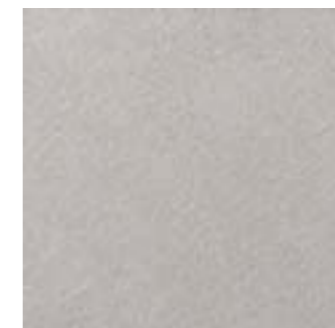


60x60cm 23.6x23.6"
nat. rett. LGWBSR7 1330
lev. rett. LGWBSL7 1420

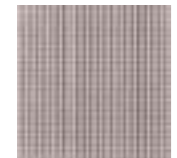
scalpellata



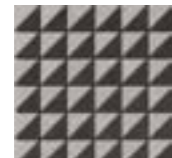
30x60cm 11.8x23.6"
rett. LGVBSR6 1290



60x60cm 23.6x23.6"
rett. LGWBSR6 1290



MOSAICO 1
sabbia
28,5x28,5cm 11.2x11.2"
LG9BS00 0440



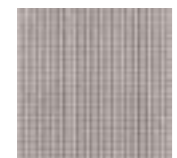
MOSAICO TRIANGOLO
chiaro (sabbia/lappata)
30x30cm 11.8x11.8"
LG9BS13 0590



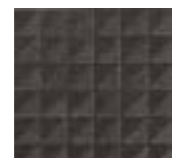
MURETTO
sabbia
30x60cm 11.8x23.6"
LG9BS05 0690



LINEA 3D
naturale (bacchetta sabbia)
30x60cm 11.8x23.6"
LG9BS10 0720



MOSAICO 1
sabbia velvet
28,5x28,5cm 11.2x11.2"
LG9BS19 0440



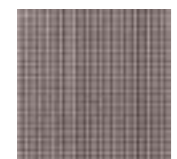
MOSAICO TRIANGOLO
scuro (lappata/levigata)
30x30cm 11.8x11.8"
LG9BS14 0590



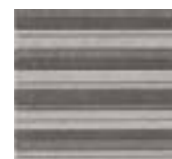
MURETTO
sabbia velvet
30x60cm 11.8x23.6"
LG9BS49 0690



LINEA 3D
stuccata (bacchetta lappata)
30x60cm 11.8x23.6"
LG9BS11 0720



MOSAICO 1
naturale
28,5x28,5cm 11.2x11.2"
LG9BS01 0440



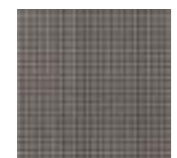
LINK 30 CHIARO
(texture nat./scalpellata
sabbia/naturale)
30x30cm 11.8x11.8"
LG9BS18 0460



MURETTO
naturale
30x60cm 11.8x23.6"
LG9BS06 0690



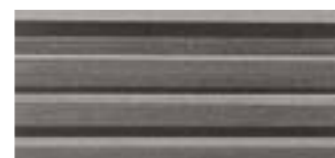
LINEA 3D
levigata (bacchetta lappata)
30x60cm 11.8x23.6"
LG9BS12 0720



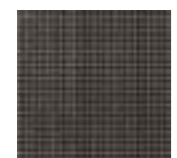
MOSAICO 1
stuccata
28,5x28,5cm 11.2x11.2"
LG9BS02 0440



MURETTO
stuccata
30x60cm 11.8x23.6"
LG9BS07 0690



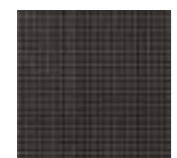
LINK 60 SCURO
(naturale/stuccata/lappata/levigata)
30x60cm 11.8x23.6"
LG9BS17 0500



MOSAICO 1
lappata
28,5x28,5cm 11.2x11.2"
LG9BS03 0440



MURETTO
lappata
30x60cm 11.8x23.6"
LG9BS08 0690



MOSAICO 1
levigata
28,5x28,5cm 11.2x11.2"
LG9BS04 0440



MURETTO
levigata
30x60cm 11.8x23.6"
LG9BS09 0690

BEAK JOLLY
1,3x1,3cm 0.5x0.5"
sabbia LG9BS40 0260
sabbia velvet LG9BS40 0260
naturale LG9BS41 0260
stuccata LG9BS42 0260
lappata LG9BS43 0260
levigata LG9BS44 0260
scalpellata LG9BS45 0260
texture lev. LG9BS47 0260
texture nat. LG9BS48 0260

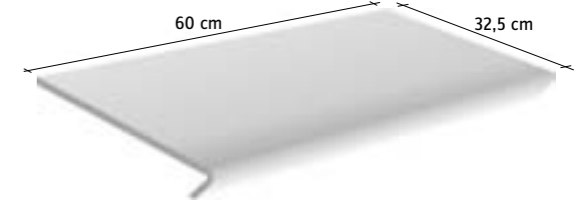


BATTISCOPA
10x60cm 3.9x23.6"
sabbia LG9BSR0 0170
sabbia velvet LG9BSR1 0170
naturale LG9BSR2 0170
stuccata LG9BSR6 0170
scalpellata LG9BSR7 0170
texture nat. LG9BSR3 0250
lappata LG9BSR4 0250
levigata LG9BSR5 0250
texture lev. LG9BSL7 0250

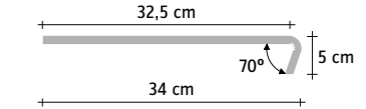
RACCORDO JOLLY
1,3x30cm 0.5x1.8"
sabbia LG9BS31 0180
sabbia velvet LG9BS31 0180
naturale LG9BS32 0180
stuccata LG9BS33 0180
lappata LG9BS34 0180
levigata LG9BS35 0180
scalpellata LG9BS36 0180
texture lev. LG9BS37 0180
texture nat. LG9BS38 0180



GRADINO STEP
60x60cm 23.6x23.6"
naturale LG9BSR1 0920
stuccata LG9BSR2 0920
lappata LG9BSR3 0990
levigata LG9BSR4 0990
sabbia LG9BSR0 0610
sabbia velvet LG9BSRE 0610
texture lev. LG9BSL7 0990
texture nat. LG9BSR7 0920
scalpellata LG9BSR6 0610



GRADINO CONTINUO 60
5x32,5x60cm 2x12.8x23.6"
naturale LG9BS21 1660
stuccata LG9BS22 1660
sabbia LG9BS20 1660
sabbia velvet LG9BS51 1660



GRADINO CONTINUO ANGOLO SX
5x32,5x32,5cm 2x12.8x12.8"
naturale LG9BS27 1990
stuccata LG9BS29 1990
sabbia LG9BS25 1990
sabbia velvet LG9BS52 1990



GRADINO CONTINUO ANGOLO DX
5x32,5x32,5cm 2x12.8x12.8"
naturale LG9BS28 1990
stuccata LG9BS30 1990
sabbia LG9BS26 1990
sabbia velvet LG9BS53 1990

Tutti i gradini continui sono da posare esclusivamente in interno.
 All steps are intended as "indoor use" only.
 Tous les nez de marche sont à utiliser exclusivement à l'intérieur.
 Alle Stufenplatten sind ausschließlich für die Verlegung im Innenbereich geeignet.
 Todos los peldaños/huella son para colocación exclusivamente en interior.

BASALTINA STONE PROJECT

gres tutta massa UGL

full-body stoneware
grès cérame en pleine masse
vollgemischtes durchgefärbtes feinsteinzeug

spessore 11mm / 12 mm lato 120

thickness
épaisseur
stärke

CARATTERISTICHE TECNICHE* TECHNICAL CHARACTERISTICS CARACTÉRISTIQUES TECHNIQUES TECHNISCHE EIGENSCHAFTEN

metodo di prova test method methode d'essai prüfmethode

fondi plain tile fond unifliese

	assorbimento d'acqua water absorption absorption d'eau wasserabsorption	iso 10545-3	E ≤ 0,04%
	resistenza al gelo frost resistance résistance au gel frostbeständigkeit	iso 10545-12	resistente resistant résistant beständig
	resistenza alla flessione bending strength résistance à la flexion beigefestigkeit	iso 10545-4	≥ 50 N/mm ² ≥ 510 Kg/cm ²
	sforzo di rottura (S) breaking strength (S) chargement de rupture (S) bruchlast (S)	iso 10545-4	≥ 3000 N
	resistenza all'abrasione profonda résistance to deep abrasion résistance à l'abrasion profonde widerstand gegen tiefenabrieb	iso 10545-6	≥ 145 mm ³
	dilatazione termica lineare thermal expansion expansion dilatation thermique linéaire thermische dilatation dilatation	iso 10545-8	α ≤ 7x10 ⁻⁶ °C ⁻¹
	resistenza agli sbalzi termici thermal shock resistance résistance aux choc thermique temperaturwechselbeständigkeit	iso 10545-9	resistente resistant résistant beständig
	resistenza attacco chimico chemical resistance résistance chimique chemischee beständigkeit	iso 10545-13	uha, ula resistente resistant résistant beständig
	resistenza alle macchie stain resistance résistance aux taches fleckenbeständigkeit	iso 10545-14	5 resistente resistant résistant beständig
	resistenza allo scivolamento slip resistance résistance au glissement rutschfestigkeit	din 51130	r10 (naturale/stuccata/ texture naturale) r11 (sabbia/scalpellata)
	resistenza allo scivolamento slip resistance résistance au glissement rutschfestigkeit	din 51097	classe C (sabbia/ scalpellata)
	coefficiente di attrito dinamico dynamic friction coefficient coefficient de friction dynamique dynamischer reibungskoeffizient	b.c.r.	μ > 0,40 (sabbia/antica/ scalpellata/naturale/ stuccata/texture naturale)
	coefficiente di attrito statico coefficient of static friction coefficient de frottement statique haftreibungskoeffizient	astm c1028	wet/dry ≥ 0,60 (sabbia/ scalpellata/naturale/ stuccata/texture naturale/ antica)

*ISO 13006-G Bla UGL – EN 14411-G Bla UGL – ANSI 137.1 (Unglazed Impervious Porcelain Paver Tile)

IMPIEGHI USES EMPLOI ANWENDUNGSBEREICHE

	alberghi hotels hotels hotels		locali pubblici public spaces lieux publics öffentliche bereiche
	abitazioni housing maisons wohnbereiche		aeroporti airports aéroports flughafen
	bar - ristoranti bar - restaurants bar - restaurants cafés - restaurants, gasthäuser		centri commerciali malls centre commerciaux einkaufszentren
	negozi shops magasins geschäfte		stazioni train stations gares bahnhöfe

IMBALLAGGI PACKING EMBALLAGE VERPACKUNGEN

articolo	scatola			europallet				
	pz.	m ^q	kg	scat.	m ^q	kg		
fondo	60x120	23,6x47,2	2	1,44	40,8	24	34,6	979,2
fondo	75x75	29,5x29,5	2	1,12	27,4	40	45,0	1096,0
fondo	60x60	23,6x23,6	4	1,44	35,0	24	34,6	840,0
fondo	30x60	11,8x23,6	8	1,44	34,9	32	46,1	1116,8
mosaico 1	28,5x28,5	11,2x11,2	5	0,41	7,7	48	19,5	372,0
mosaico triangolo	30x30	11,8x11,8	11	0,99	20,9	-	-	-
link 60	30x60	11,8x23,6	4	0,72	16,0	40	28,8	640,0
link 30	30x30	11,8x11,8	11	0,99	21,4	30	29,7	643,5
muretto	30x60	11,8x23,6	4	0,72	15,2	30	21,6	465,0
linea 3D	30x60	11,8x23,6	4	0,72	16,8	-	-	-
mosaico triangolo 3D	30x30	11,8x11,8	4	0,36	8,4	-	-	-
battiscopa	10x60	3,9x23,6	12	7,2 m.l.	18,0	55	396,0 m.l.	990,0
gradino step	60x60	23,6x23,6	4	1,44	35,0	24	34,6	840,0
gradino continuo 60	5x32,5x60	2x12,8x23,6	4	0,78	19,2	14	10,9	268,8
ang. gradino continuo	5x32,5x32,5	2x12,8x12,8	2	0,21	5,8	14	3,0	81,2
raccordo jolly	1,3x30	0,5x11,8	8	0,03	0,3	-	-	-
beak	1,3x1,3	0,5x0,5	4	-	-	-	-	-

**CERTIFICAZIONI
CERTIFICATIONS
CERTIFICATIONS
PRÜFZEUGNISSE**



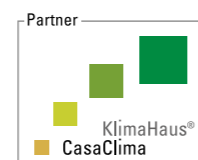
iso 14001



iso 9001



emas



casaclima ***



leed*



marchio CE



leed**



ecolabel

* LEED
Lea Ceramiche, tramite la holding Panariagroup Industrie Ceramiche S.p.A., è socio ordinario del Green Building Council e del GBC Italia. Through Panariagroup Industrie Ceramiche S.p.A., Lea Ceramiche is an ordinary member of the Green Building Council and the GBC Italia. Par le biais de Panariagroup Industrie Ceramiche S.p.A., Lea Ceramiche est membre ordinaire du Green Building Council et du GBC Italia. Lea Ceramiche, durch die Holding Panariagroup Industrie Ceramiche S.p.A., ist ordentliches Mitglied von dem Green Building Council und dem GBC Italien. Lea Ceramiche, a través del holding Panariagroup Industrie Ceramiche S.p.A., es miembro afiliado del Consejo Construcción Verde y del Consejo Construcción Verde de Italia.

*** CASACLIMA
Lea Ceramiche, tramite la holding Panariagroup Industrie Ceramiche S.p.A., ha ottenuto la certificazione Partner Casaclima. Through Panariagroup Industrie Ceramiche S.p.A., Lea Ceramiche has obtained the Partner Casaclima certification. Par le biais de Panariagroup Industrie Ceramiche S.p.A., Lea Ceramiche a obtenu la certification Partner Casaclima. Lea Ceramiche, durch die Holding Panariagroup Industrie Ceramiche S.p.A., hat die Bescheinigung als Partner Casaclima bekommen. Lea Ceramiche, a través del holding Panariagroup Industrie Ceramiche S.p.A., ha obtenido la certificación Partner Casaclima.

** LEED
Il contenuto di materiale riciclato "pre-consumo" della serie Basaltina Stone Project è del 40%, come certificato da ente esterno qualificato (certificato disponibile sul sito www.ceramichelea.com). Basaltina Stone Project is produced with 40% of pre-consumer materials, as certified by a qualified external company (certificate available on the website www.ceramichelea.com).





Corredi : Basaltina Stone Project Slimtech spessore ridotto SLIMTECH

complement : Basaltina Stone Project Slimtech reduced thickness



Sabbiata

100x4,9cm/39.4x1.9"
slimtech
slimtech plus



Naturale

100x50cm/39.4x19.7"
slimtech
slimtech plus



50x50cm/19.7x19.7"
slimtech plus



Lappata

100x100cm/39.4x39.4"
slimtech plus



300x100cm/118.1x39.4"
slimtech
slimtech plus
slimtech twin*



Stuccata

* Disponibile su richiesta
Available on request
Disponible sur demande
Auf Anfrage erhältlich
Disponible bajo petición

GRES LAMINATO UGL

Laminated stoneware UGL
Grès laminé UGL
Laminiertes Feinsteinzeug UGL
Gres laminado UGL

FUGA MINIMA CONSIGLIATA PER POSA IN INTERNO

Minimum suggested joint for indoor fixing
Joint minimum conseillé pour pose en interieure
Empfohlene Fugenbreite fuer Innenbereich
Junta mínima aconsejada para colocación en interior

1 mm slimtech - slimtech plus: Parete / Wall / Mur / Wand / Revestimiento
2 mm slimtech plus - slimtech twin: Pavimento / Floor / Sol
Boden / Pavimento
3 mm slimtech plus 3000x1000 mm: Pavimento / Floor / Sol
Boden / Pavimento

RESISTENZA ALLO SCIVOLAMENTO - DIN 51130

Slip resistance
Résistance au glissement
Rutschfestigkeit
Resistencia antideslizante

R9 (plus+twin)

COEFFICIENTE ATTRITO STATICO - ASTM C1028

Coefficient of friction (C.O.F.)

wet \geq 0.60 - dry \geq 0.60
(plus+twin)

SPESSORE

Thickness
Epaisseur
Stärke
Espesor

3 mm slimtech
3,5 mm slimtech plus
7 mm slimtech twin

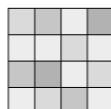
COEFFICIENTE DI ATTRITO DINAMICO B.C.R.

Dynamic friction coefficient
Coefficient de friction dynamique
Dynamischer reibungskoeffizient
Coeficiente de fricción dinámica

$\mu > 0,40$ (plus+twin)

STONALIZZAZIONE

Shading
Denuançage
Spielfarbig
Grado de tonalización



V3



basaltina stone project slimtech naturale 100x300cm / 39.4x118.1"
basaltina stone project slimtech lappata 50x100cm / 19.7x39.4"
basaltina stone project slimtech lappata 4,9x100cm / 1.9x39.4"
basaltina stone project slimtech plus naturale 100x100cm / 39.4x39.4"

sabbiata



50x50cm 19.7x19.7"
 slimtech plus LSDBS05 1620



100x50cm 39.4x19.7"
 slimtech LSBBS00 1400
 slimtech plus LSBBS05 1620



100x100cm 39.4x39.4"
 slimtech LSCBS05 1750
 slimtech plus LSCBS05 1750



4,9x100cm 1.9x39.4"
 slimtech LSEBS00 1750
 slimtech plus LSEBS05 1930

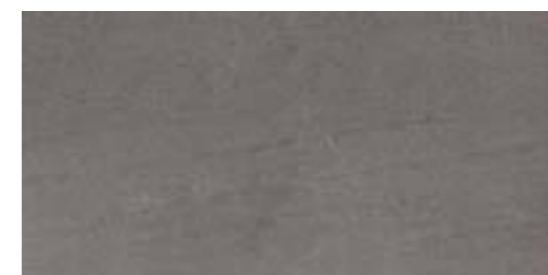
300x100cm 118.1x39.4"
 slimtech** LSABS00 1560
 slimtech plus** LSABS05 1810
 slimtech twin*

*su richiesta - upon request - sur demand - auf Anfrage - bajo pedido

naturale



50x50cm 19.7x19.7"
 slimtech plus LSDBS15 1620



100x50cm 39.4x19.7"
 slimtech LSBBS10 1400
 slimtech plus LSBBS15 1620



100x100cm 39.4x39.4"
 slimtech LSCBS15 1750
 slimtech plus LSCBS15 1750



4,9x100cm 1.9x39.4"
 slimtech LSEBS10 1750
 slimtech plus LSEBS15 1930

300x100cm 118.1x39.4"
 slimtech** LSABS10 1560
 slimtech plus** LSABS15 1810
 slimtech twin*

**per ordini inferiori alle 5 lastre sarà addebitato il costo del pallet a Euro 80,00 netto. - the cost of the pallet, Euro 80,00 net, will be charged for orders less than 5 slabs. - pour toutes commandes inférieures à 5 dalles, un cout de 80 Euro correspondant au cout de la palette sera ajouté. - bei Abnahme einer Menge unter 5 Platten werden Euro 80,00 Netto für Verpackung/palette belastet. - Por pedidos inferiores a las 5 piezas adeudaremos el coste del palet de 80 Euro neto.

stuccata



300x100cm 118.1x39.4"
 slimtech** LSABS20 1560
 slimtech plus** LSABS25 1810
 slimtech twin*



50x50cm 19.7x19.7"
 slimtech plus LSDBS25 1620



100x50cm 39.4x19.7"
 slimtech LSBBS20 1400
 slimtech plus LSBBS25 1620



100x100cm 39.4x39.4"
 slimtech LSCBS25 1750



4,9x100cm 1.9x39.4"
 slimtech LSEBS20 1750
 slimtech plus LSEBS25 1930

*su richiesta - upon request - sur demand - auf Anfrage - bajo pedido

lappata



300x100cm 118.1x39.4"
 slimtech** LSABS30 1560
 slimtech plus** LSABS35 1810
 slimtech twin*



50x50cm 19.7x19.7"
 slimtech plus LSDBS35 1620



100x50cm 39.4x19.7"
 slimtech LSBBS30 1400
 slimtech plus LSBBS35 1620

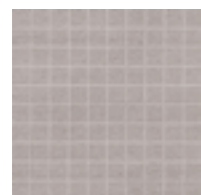


100x100cm 39.4x39.4"
 slimtech LSCBS35 1750



4,9x100cm 1.9x39.4"
 slimtech LSEBS30 1750
 slimtech plus LSEBS35 1930

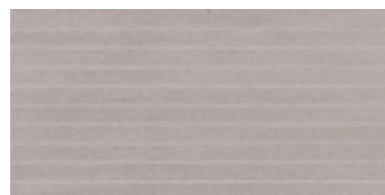
**per ordini inferiori alle 5 lastre sarà addebitato il costo del pallet a Euro 80,00 netto. - the cost of the pallet, Euro 80,00 net, will be charged for orders less than 5 slabs. - pour toutes commandes inférieures à 5 dalles, un cout de 80 Euro correspondant au cout de la palette sera ajouté. - bei Abnahme einer Menge unter 5 Platten werden Euro 80,00 Netto für Verpackung/palette belastet. - Por pedidos inferiores a las 5 piezas adeudaremos el coste del palet de 80 Euro neto.



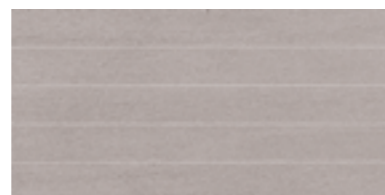
MOSAICO QUADRO
sabbia
25x25cm 9.8x9.8"
LS9BS00 0330



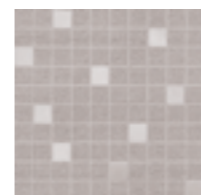
MOSAICO MATTONE
sabbia
25x25cm 9.8x9.8"
LS9BS10 0240



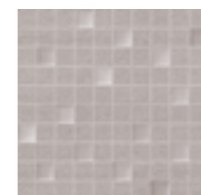
MOSAICO STRISCIA
sabbia
50x25cm 19.7x9.8"
LS9BS20 0470



MOSAICO LISTELLO
sabbia
50x25cm 19.7x9.8"
LS9BS30 0390



MOSAICO INOX
sabbia
25x25cm 9.8x9.8"
LS9BS05 0750



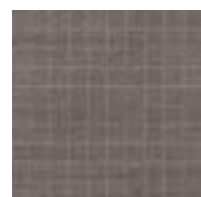
MOSAICO SATIN
sabbia
25x25cm 9.8x9.8"
LS9BS15 0750



MOSAICO METAL
chiaro (naturale)
50x100cm 19.7x39.4"
LS9BS37 2110



MOSAICO GLITTER
chiaro (sabbia)
50x100cm 19.7x39.4"
LS9BS35 2090



MOSAICO QUADRO
naturale
25x25cm 9.8x9.8"
LS9BS01 0330



MOSAICO MATTONE
naturale
25x25cm 9.8x9.8"
LS9BS11 0240



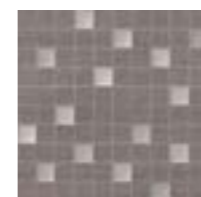
MOSAICO STRISCIA
naturale
50x25cm 19.7x9.8"
LS9BS21 0470



MOSAICO LISTELLO
naturale
50x25cm 19.7x9.8"
LS9BS31 0390



MOSAICO INOX
naturale
25x25cm 9.8x9.8"
LS9BS06 0750



MOSAICO SATIN
naturale
25x25cm 9.8x9.8"
LS9BS16 0750



MOSAICO QUADRO
stuccata
25x25cm 9.8x9.8"
LS9BS02 0330



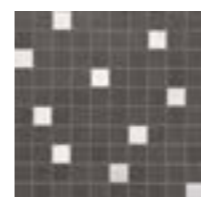
MOSAICO MATTONE
stuccata
25x25cm 9.8x9.8"
LS9BS12 0240



MOSAICO STRISCIA
stuccata
50x25cm 19.7x9.8"
LS9BS22 0470



MOSAICO LISTELLO
stuccata
50x25cm 19.7x9.8"
LS9BS32 0390



MOSAICO INOX
stuccata
25x25cm 9.8x9.8"
LS9BS07 0750



MOSAICO PEARL
stuccata
25x25cm 9.8x9.8"
LS9BS17 0750



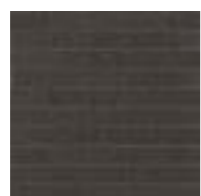
MOSAICO METAL
scuro (lappata)
50x100cm 19.7x39.4"
LS9BS38 2110



MOSAICO GLITTER
scuro (stuccata)
50x100cm 19.7x39.4"
LS9BS36 2090



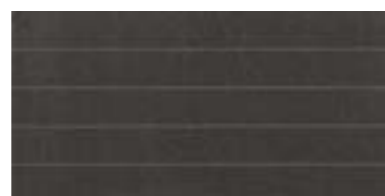
MOSAICO QUADRO
lappata
25x25cm 9.8x9.8"
LS9BS03 0330



MOSAICO MATTONE
lappata
25x25cm 9.8x9.8"
LS9BS13 0240



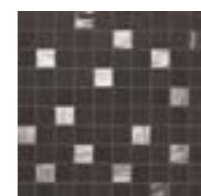
MOSAICO STRISCIA
lappata
50x25cm 19.7x9.8"
LS9BS23 0470



MOSAICO LISTELLO
lappata
50x25cm 19.7x9.8"
LS9BS33 0390



MOSAICO INOX
lappata
25x25cm 9.8x9.8"
LS9BS08 0750



MOSAICO PEARL
lappata
25x25cm 9.8x9.8"
LS9BS18 0750



**IMPIEGHI
USES
EMPLOI
ANWENDUNGSBEREICHE**

	alberghi hotels hotels hotels		locali pubblici public spaces lieux publics öffentliche bereiche
	abitazioni housing maisons wohnbereiche		aeroporti airports aéroports flughafen
	bar - ristoranti bar - restaurants bar - restaurants cafés - restaurants, gasthäuser		centri commerciali malls centre commerciaux einkaufszentren
	negozi shops magasins geschäfte		stazioni train stations gares bahnhöfe

**IMBALLAGGI
PACKING
EMBALLAGE
VERPACKUNGEN**

articolo	scatola			europallet				
	pz.	mq	kg	scat.	mq	kg		
fondo	300x100	118.1x39.4	1	3,0	22,2	13 pz/pl	39,0	288,6
fondo plus	300x100	118.1x39.4	1	3,0	25,3	12 pz/pl	36,0	304,2
fondo plus	100x100	39.4x39.4	3	3,0	24,1	25	75,0	602,5
fondo	100x50	39.4x19.7	5	2,50	17,8	32	80,0	569,6
fondo plus	100x50	39.4x19.7	5	2,50	20,0	32	80,0	640,0
fondo plus	50x50	19.7x19.7	7	1,75	14,0	48	84,0	672,0
fondo	4,9x100	1.9x39.4	10	0,49	4,0	39	19,1	156,0
fondo plus	4,9x100	1.9x39.4	10	0,49	4,2	39	19,1	163,8
mosaico quadro	25x25	9.8x9.8	10	0,62	4,6	60	37,5	276,0
mosaico mattone	25x25	9.8x9.8	10	0,62	4,6	60	37,5	276,0
mosaico striscia	25x50	9.8x19.7	10	1,25	6,9	60	75,0	414,0
mosaico listello	25x50	9.8x19.7	10	1,25	6,9	60	75,0	414,0
mosaico metal	50x100	39.4x19.7	2	1,0	9,9	25	25,0	247,6
mosaico glitter	50x100	39.4x19.7	2	1,0	8,8	25	25,0	220,7
mosaico inox	25x25	9.8x9.8	10	0,62	4,6	60	37,5	276,0
mosaico satin	25x25	9.8x9.8	10	0,62	4,6	60	37,5	276,0
mosaico pearl	25x25	9.8x9.8	10	0,62	4,6	60	37,5	276,0

SLIMTECH BASALTINA STONE PROJECT

gres laminato UGL

full-body stoneware
grès cérame pleine masse
vollgemischtes durchgefärbtes feisteinzeug

spessore 3mm







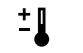





thickness
épaisseur
stärke

spessore 3,5 mm

thickness
épaisseur
stärke

spessore 7 mm

thickness
épaisseur
stärke

	CARATTERISTICHE TECNICHE* TECHNICAL CHARACTERISTICS CARACTÉRISTIQUES TECHNIQUES TECHNISCHE EIGENSCHAFTEN	metodo di prova test method methode d'essai prüfmethode	requisiti richiesti requirements	slimtech	slimtech plus	slimtech twin
	assorbimento d'acqua water absorption absorption d'eau wasserabsorption	iso 10545-3	< 0,5%	0,1%	0,1%**	0,1%**
	resistenza al gelo frost resistance résistance au gel frostbeständigkeit	iso 10545-12	nessuna alterazione no alterations	resistente resistant résistant beständig	resistente resistant résistant beständig	resistente resistant résistant beständig
	resistenza alla flessione bending strength résistance à la flexion beigefestigkeit	iso 10545-4	> 350 Kg/cm ² > 35 N/mm ²	> 350 Kg/cm ² > 35 N/mm ²	> 1200 Kg/cm ² > 120 N/mm ²	> 550 Kg/cm ² > 55 N/mm ²
	sfuerzo di rottura (S) breaking strength (S) chargement de rupture (S) bruchlast (S)	iso 10545-4	> 70 Kg > 700 N	non richiesto materiale da rivestimento not required wall tiles	> 100 Kg > 1000 N	> 180 Kg > 1800 N
	resistenza all'abrasione profonda resistance to deep abrasion résistance à l'abrasion profonde widerstand gegen tiefenabrier	iso 10545-6	≤ 175 mm ³	≤ 145 mm ³	≤ 145 mm ³	≤ 145 mm ³
	resistenza a compressione resistance to compression résistance à la compression druckfestigkeit	-	-	non richiesto materiale da rivestimento not required wall tiles	≥ 4000 Kg/cm ² ≥ 400 Kg/mm ²	≥ 4000 Kg/cm ² ≥ 400 Kg/mm ²
	resistenza agli sbalzi termici thermal shock resistance résistance aux choc thermique temperaturwechselbeständigkeit	iso 10545-9	resistente resistant résistant beständig	resistente resistant résistant beständig	resistente resistant résistant beständig	resistente resistant résistant beständig
	resistenza attacco chimico chemical resistance résistance chimique chemischee beständigkeit	iso 10545-13	come indicato dal produttore as indicated by manufacturer	uha, ula resistente resistant résistant beständig	uha, ula resistente resistant résistant beständig	uha, ula resistente resistant résistant beständig
	resistenza alle macchie stain resistance résistance aux taches fleckenbeständigkeit	iso 10545-14	≥ classe 3	5 resistente resistant résistant beständig	5 resistente resistant résistant beständig	5 resistente resistant résistant beständig
	resistenza allo scivolamento slip resistance résistance au glissement rutschfestigkeit	din 51130	r9 6° ≤ α ≤ 10°	non richiesto materiale da rivestimento not required wall tiles	r9	r9
	coefficiente di attrito dinamico dynamic friction coefficient coefficient de friction dynamique dynamischer reibungskoeffizient	b.c.r.	>0,40 L. 13/89 - DM. 236/89 D. Lgs 503/96	non richiesto materiale da rivestimento not required wall tiles	> 0,40 leather - dry rubber - wet	> 0,40 leather - dry rubber - wet
	coefficient of friction (c.o.f.)	astm c1028	COF < 0,50 questionable 0,50 ≤ COF < 0,50 conditionally slip resistant COF ≥ 0,60 slip resistant	not required wall tiles	dry - neolite ≥ 0.60 wet - neolite ≥ 0.60	dry - neolite ≥ 0.60 wet - neolite ≥ 0.60

*ISO 13006-G EN 14411-G Bla UGL

**VALORE RIFERITO AL MATERIALE CERAMICO

**CERTIFICAZIONI
CERTIFICATIONS
CERTIFICATIONS
PRÜFZEUGNISSE**



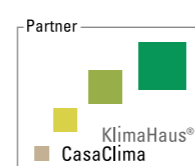
iso 14001



iso 9001



emas



casaclima ***



leed*



marchio CE

LEED
Lea Ceramiche, tramite la holding Panariagroup Industrie Ceramiche S.p.A., è socio ordinario del Green Building Council e del GBC Italia.
Through Panariagroup Industrie Ceramiche S.p.A., Lea Ceramiche is an ordinary member of the Green Building Council and the GBC Italia.
Par le biais de Panariagroup Industrie Ceramiche S.p.A., Lea Ceramiche est membre ordinaire du Green Building Council et du GBC Italia.
Lea Ceramiche, durch die Holding Panariagroup Industrie Ceramiche S.p.A., ist ordentliches Mitglied von dem Green Building Council und dem GBC Italien.
Lea Ceramiche, a través del holding Panariagroup Industrie Ceramiche S.p.A., es miembro afiliado del Consejo Construcción Verde y del Consejo Construcción Verde de Italia.

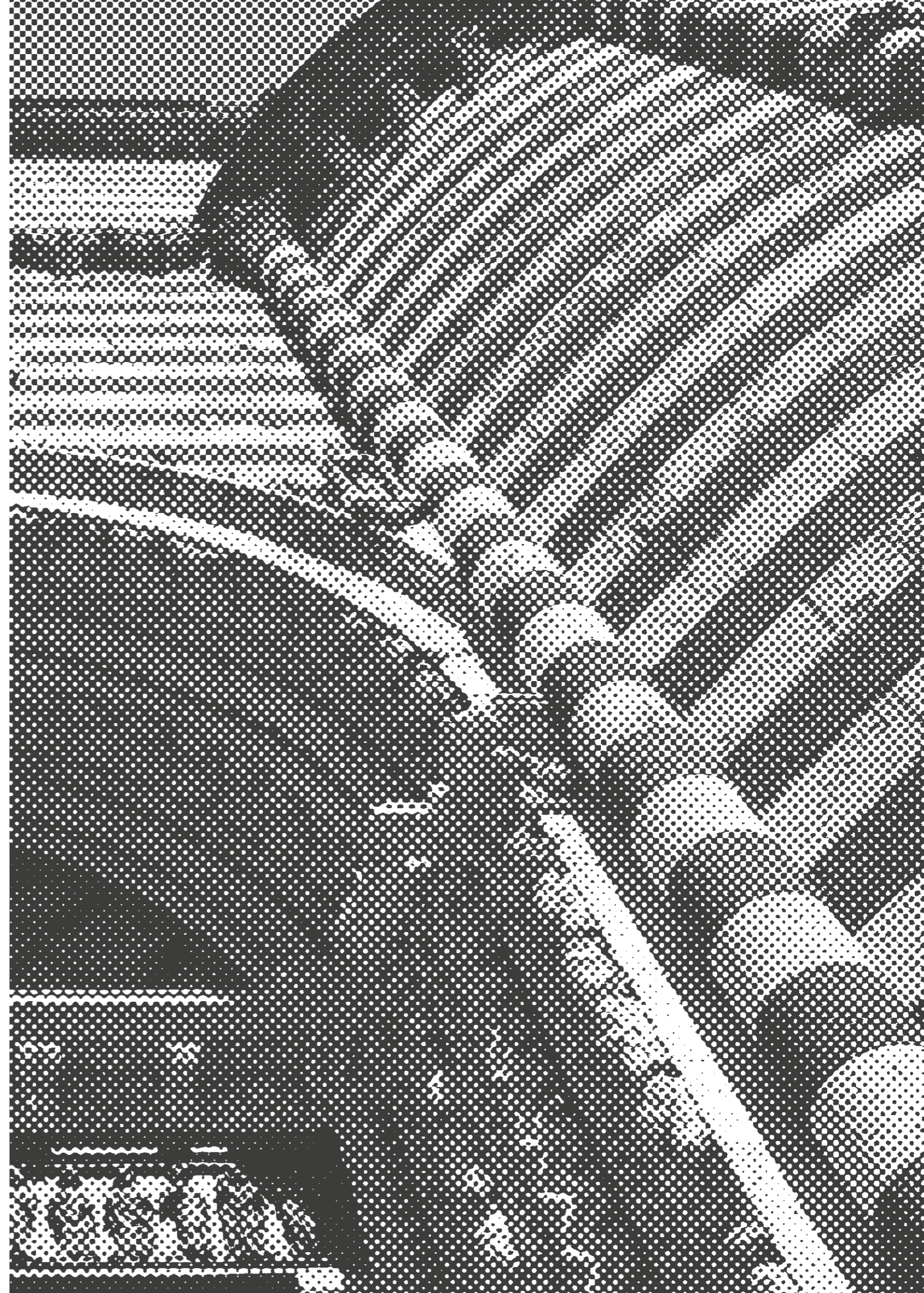


*** CASACLIMA
Lea Ceramiche, tramite la holding Panariagroup Industrie Ceramiche S.p.A., ha ottenuto la certificazione Partner Casaclima.
Through Panariagroup Industrie Ceramiche S.p.A., Lea Ceramiche has obtained the Partner Casaclima certification.
Par le biais de Panariagroup Industrie Ceramiche S.p.A., Lea Ceramiche a obtenu la certification Partner Casaclima.
Lea Ceramiche, durch die Holding Panariagroup Industrie Ceramiche S.p.A., hat die Bescheinigung als Partner Casaclima bekommen.
Lea Ceramiche, a través del holding Panariagroup Industrie Ceramiche S.p.A., ha obtenido la certificación Partner Casaclima.

mktg lea

**LEGENDA CODICI
CODE NOTICE
LÉGENDE CODES
ERLÄUTERUNG DES ARTIKELS**

CODICE ARTICOLO	PRODUCT CODE	CODE ARTICLE	ARTIKEL NUMMER
L000000	L000000	L000000	L000000
CODICE PREZZO	PRICE CODE	CODE PRIX	PREIS ARTIKEL NUMMER
0000 materiale venduto al mq	0000 item sold by sqmt	0000 article vendu au m ²	0000 artikel qm weise
0000 materiale venduto al pz	0000 item sold by piece	0000 article vendu a la piece	0000 artikel stückweise





LEA

CERAMICHE

LEA CERAMICHE

Via Cameazzo, 21
41042 Fiorano Modenese
Modena Italy

Tel +39 0536 837811
Fax +39 0536 830326
info@ceramichelea.it
www.ceramichelea.com

Panariagroup Industrie Ceramiche S.p.A.

SHOWROOM LEA CERAMICHE

Via Durini, 3
20122 Milano

Tel +39 02 76011406
showroom_milano@ceramichelea.it

LEA NORTH AMERICA, LLC

800 Clanton Road, Suite N
Charlotte, NC 28217

Tel +1 704 522 6300
Fax +1 704 522 6080
info@leausa.us